

Housing, Schooling, and “the Everyday”

Peter Miller, Ph.D.

University of Wisconsin-Madison

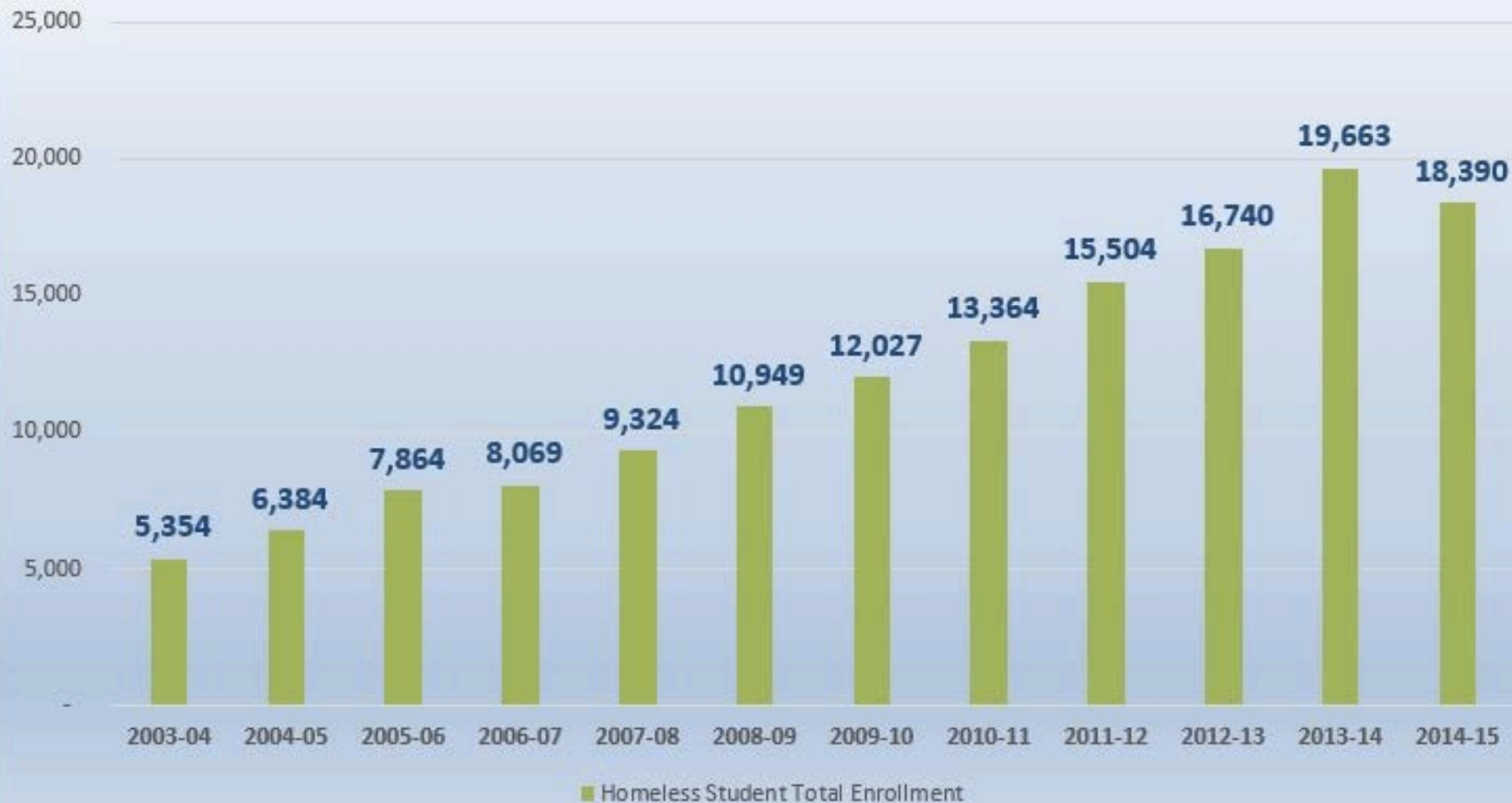
Homeless students 2007-08

- California 224,249
- New York 71,218
- Illinois 26,238
- Alabama 11,687
- Indiana 8,480
- N. Dakota 686

Homeless students 2007-08 → 2013-14

- California 224,249 → 310,002
- New York 71,218 → 145,259
- Illinois 26,238 → 55,422
- Alabama 11,687 → 19,266
- Indiana 8,480 → 17,926
- N. Dakota 686 → 2,395

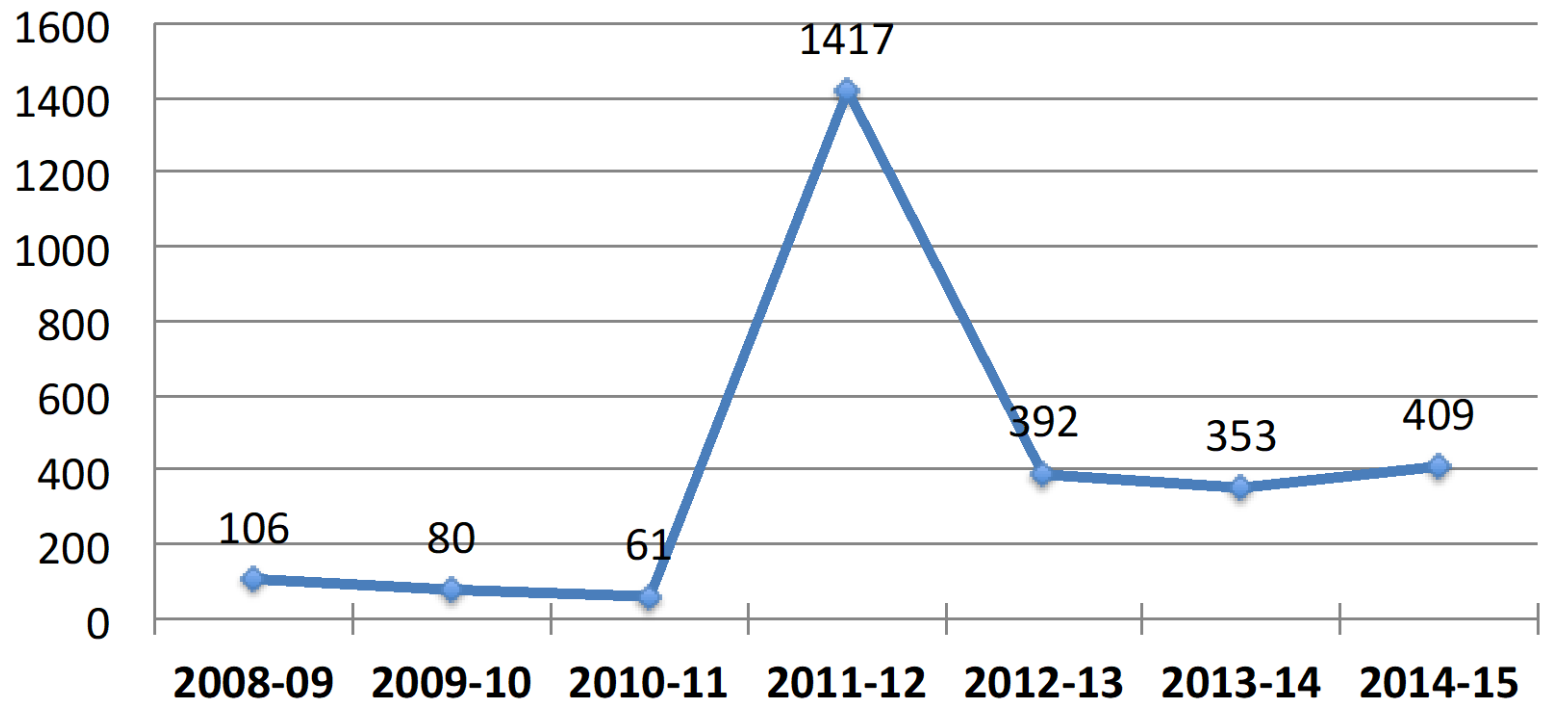
Homeless Student Enrollment in Wisconsin 2003-2015







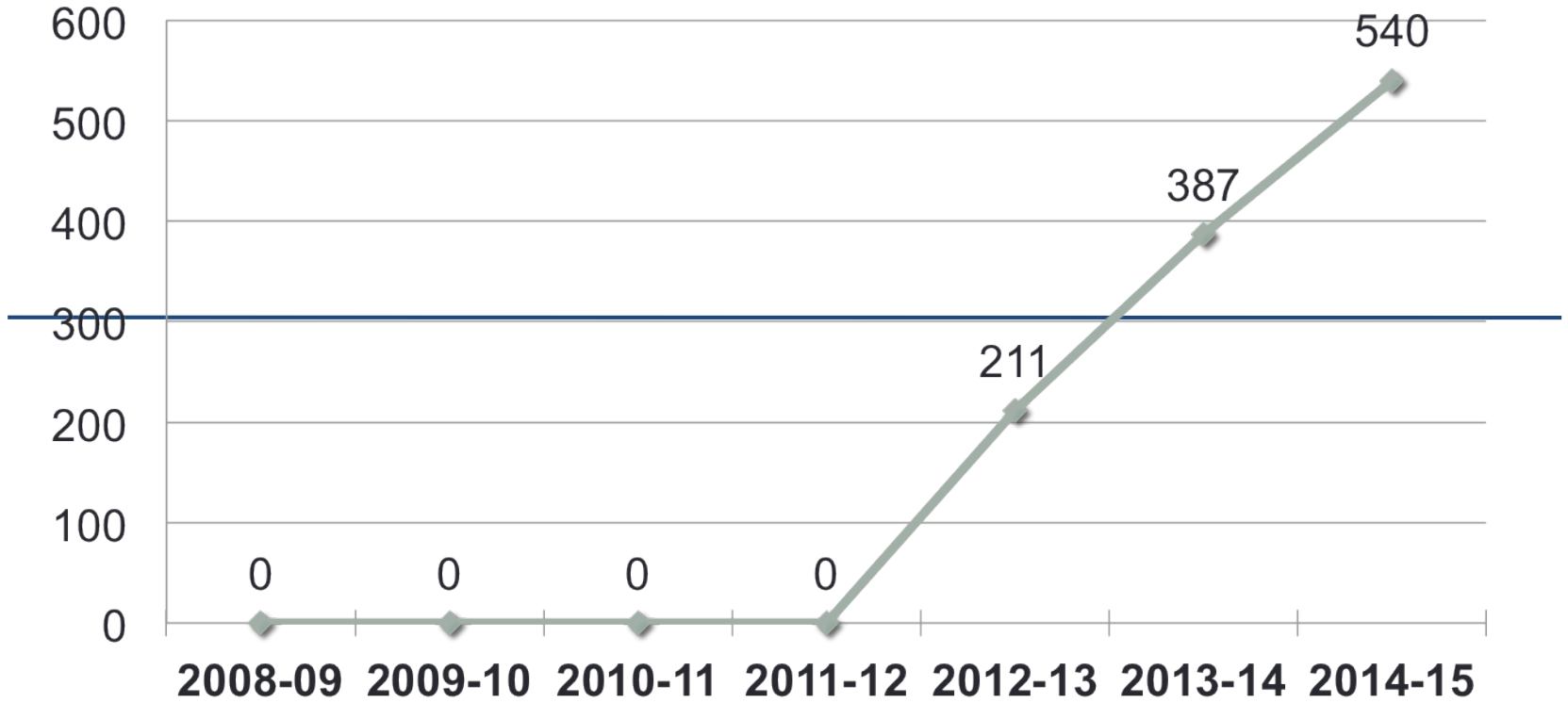
Minot





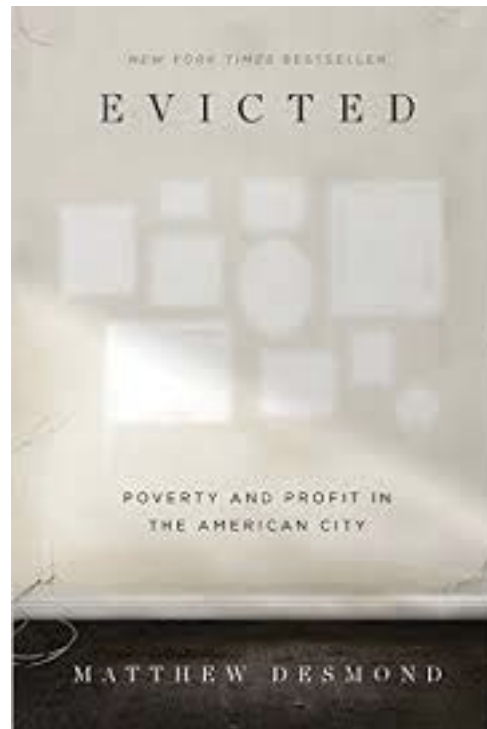


McKenzie Co.



“Life in poverty is facing one crisis after another” (p. 286).

“The poor are constantly exposed to evidence of their own irrelevance” (p. 257).



UNANTICIPATED

G  I N S

ORIGINS
OF NETWORK
INEQUALITY
IN EVERYDAY
LIFE

MARIO LOIS SMALL

Brokerage is not just about connections to people and resources, but also to *ideas and information*.

everyday:

Social



everyday:

Routine



everyday:

Unnoticed



formation

everyday

family aspiration, reflection,



everyday

is rattled and redefined



everyday

is rattled and redefined

everyday

is rattled and redefined
by homelessness

What advantages do students receive as a result of being part of your school(s)?

What advantages do parents and families receive as a result of being part of your school(s)?

What advantages does your community receive from your school(s)?

What are the other “high advantage” organizations with which students and families are associated?

- School year = 180 days
- School day = 6.9 hours

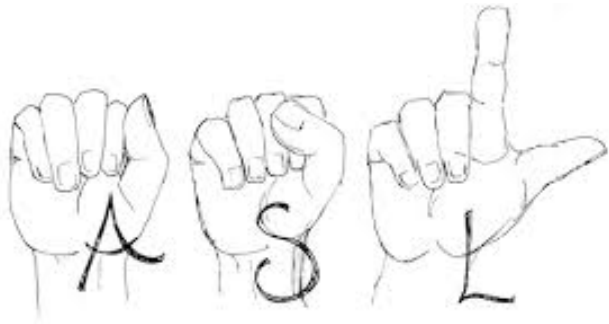
1242 hours

Mr. Martin

Mr. Martin



Mr. Martin



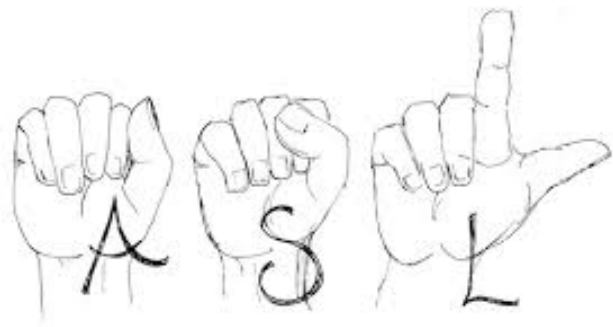
“I love you!”

Mr. Martin



“I love you!”

$$11 \times 180 = 1,980$$

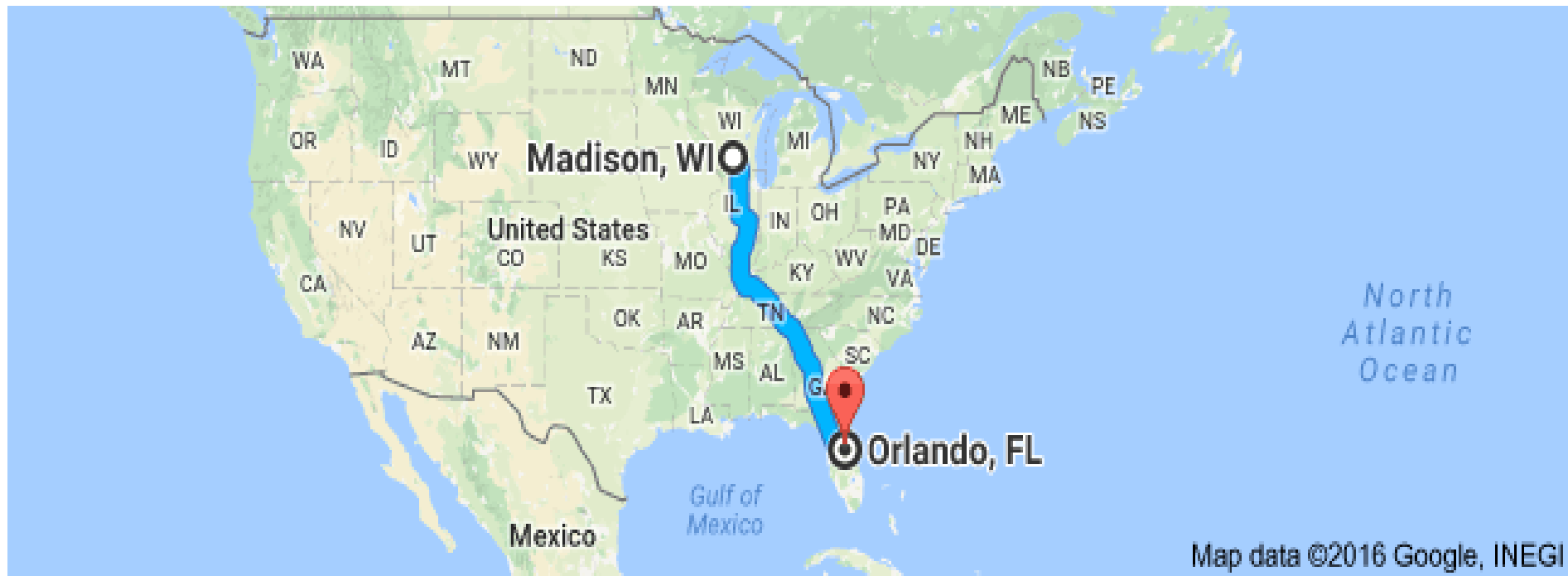


“I love you!”

1,980

8,909 miles driven

8,909 miles driven



17,215 minutes (287 hours)

14,380 minutes (12 days)

1272 drives

552 drives started from home

459 drives ended at home

868 drives lasted 10 minutes or less

1272 drives

1172 drives were “totally normal”

98 drives “somewhat different”

2 drives were “really different”

1272 drives

1272 occasions for anticipation, reflection, and formation

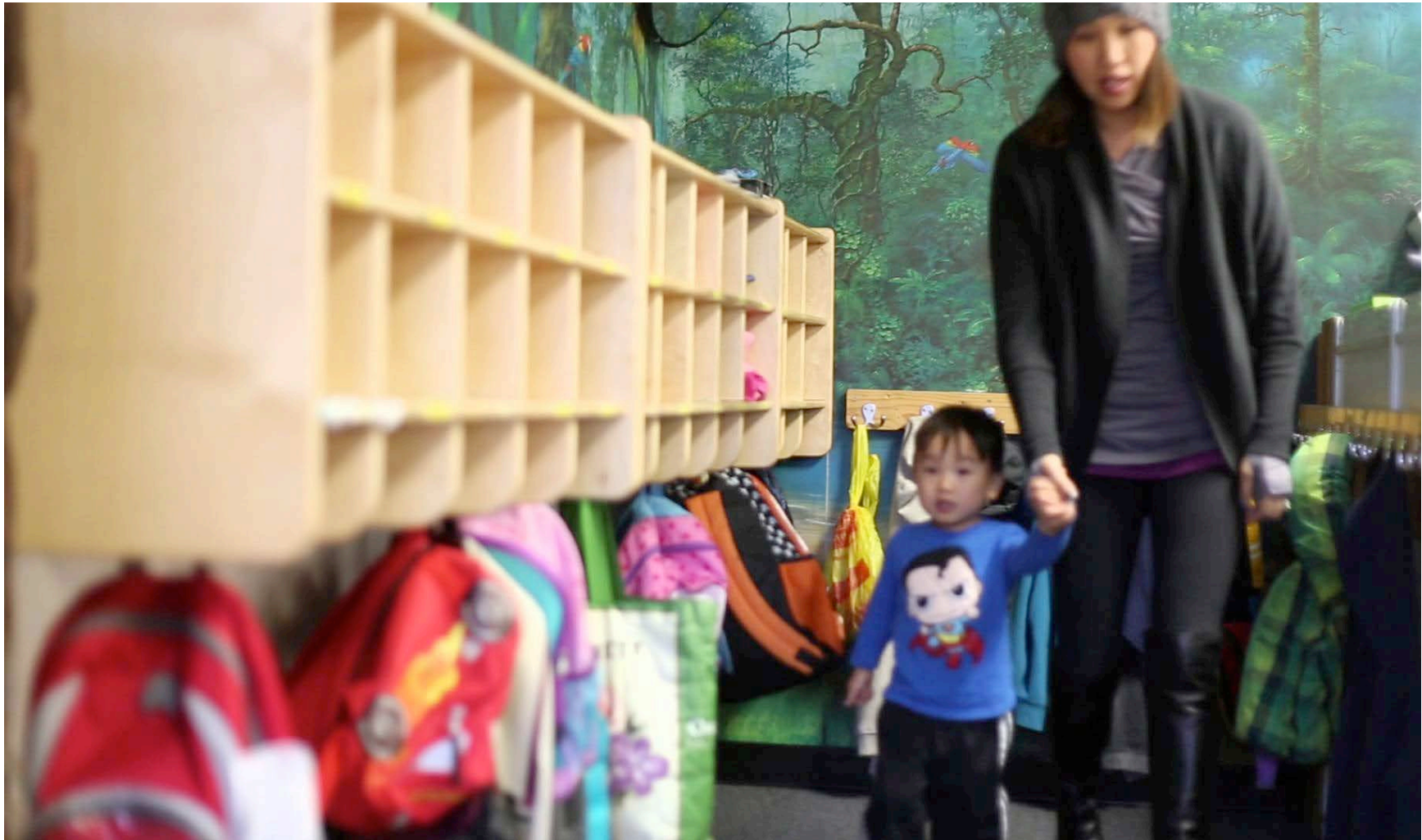
1272 drives

1272 occasions for **anticipation, reflection, and formation**

The *collective impact* of everyday

shapes “meta” **anticipation, reflection, and formation**





What are the “1254 drives” in the lives that your organization serves?

Thank you

Contact:

Peter Miller

University of Wisconsin-Madison

pmmiller2@wisc.edu