

OFFICE OF THE ASSISTANT SECRETARY FOR HEALTH



Human Services Programs and the Opioid Crisis

ADMIRAL BRETT P. GIROIR, M.D.
Assistant Secretary for Health
Senior Adviser, Immediate Office of the Secretary



THE STATE OF OPIOID MISUSE IN AMERICA (2018)

10.3 million
people misused opioids
in the past year

- 9.9 million misused pain relievers
- 808,000 used heroin
- 506,000 both misused pain relievers and heroin

 **from 11.4 million (2017)**

2.0 million
people had an opioid
use disorder

- 1.7 million people with a prescription pain reliever use disorder
- 526,000 people with a heroin use disorder
- 226,000 had both pain reliever and heroin use disorders

51.3%

obtained the last pain reliever they misused from a friend or relative

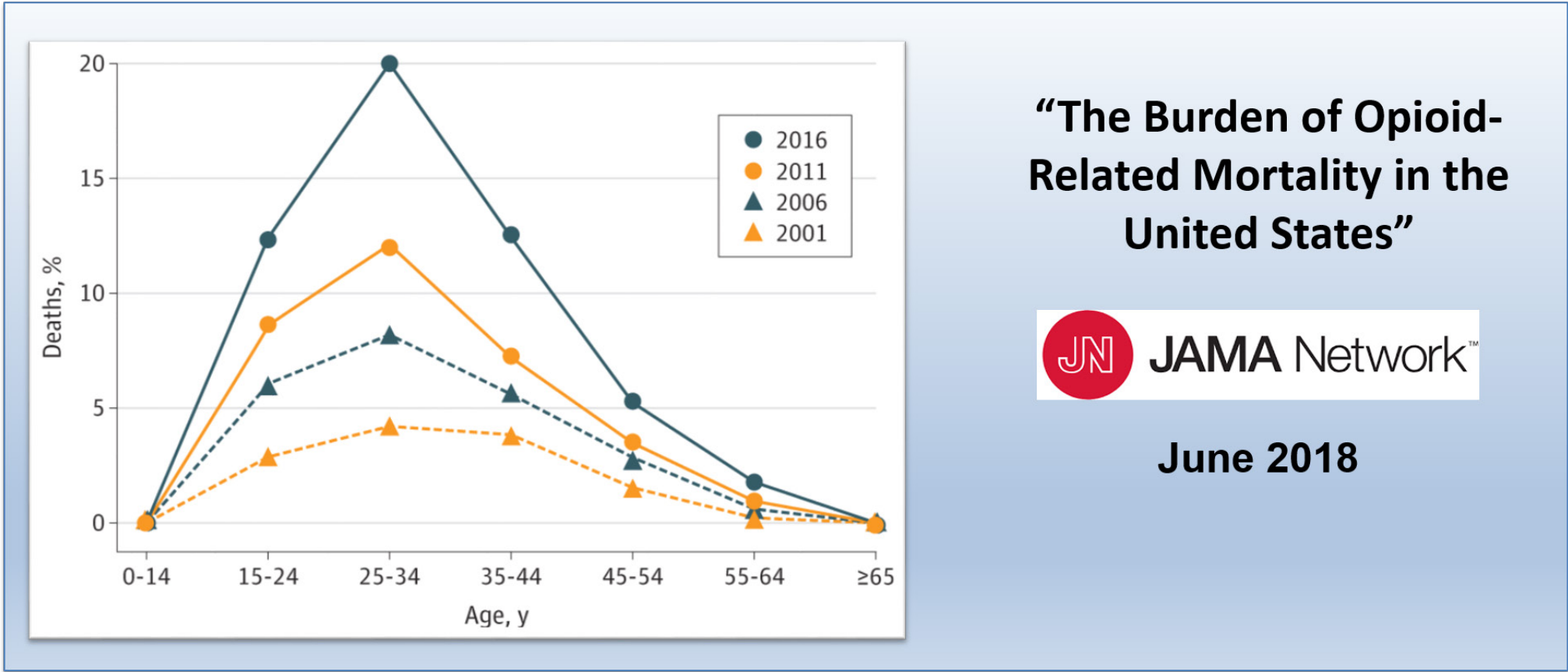
37.6%

prescribed by a healthcare provider. Only **2%** received from >1 provider

Main reasons for opioid misuse: Pain 63.6%



PROPORTION OF DEATHS RELATED TO OPIOIDS BY AGE GROUP: 2001, 2006, 2011, and 2016



“The Burden of Opioid-Related Mortality in the United States”

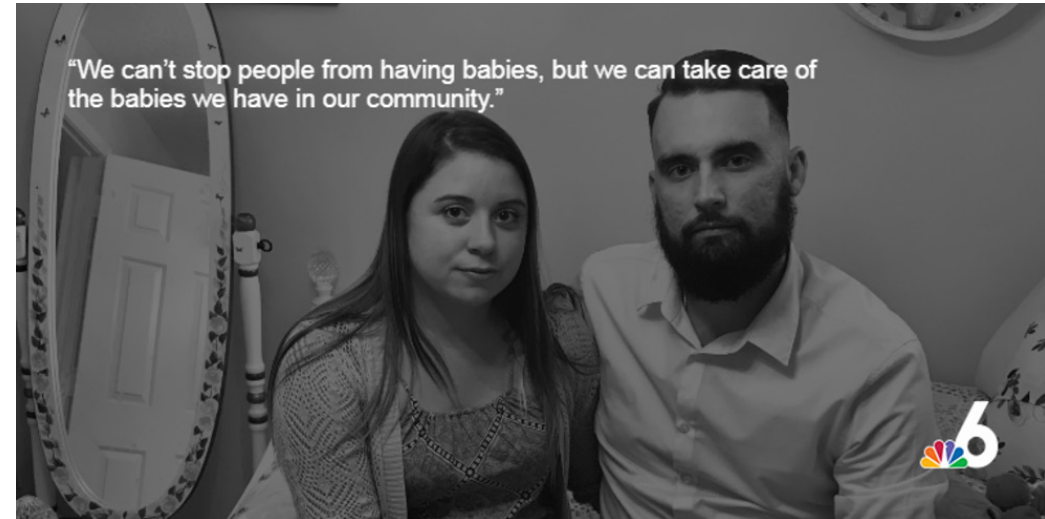


June 2018



THE HUMAN SERVICES CRISIS: EXAMPLE, MIAMI

OCTOBER 25, 2018



"Right now, we have more children between birth and five in shelters and in group care than we've ever had... and that may very well be a function of opioids," said Larry Rein, the Executive Director of ChildNet.

**TANF, child support, and related programs
can help families affected by OUD
find economic stability**

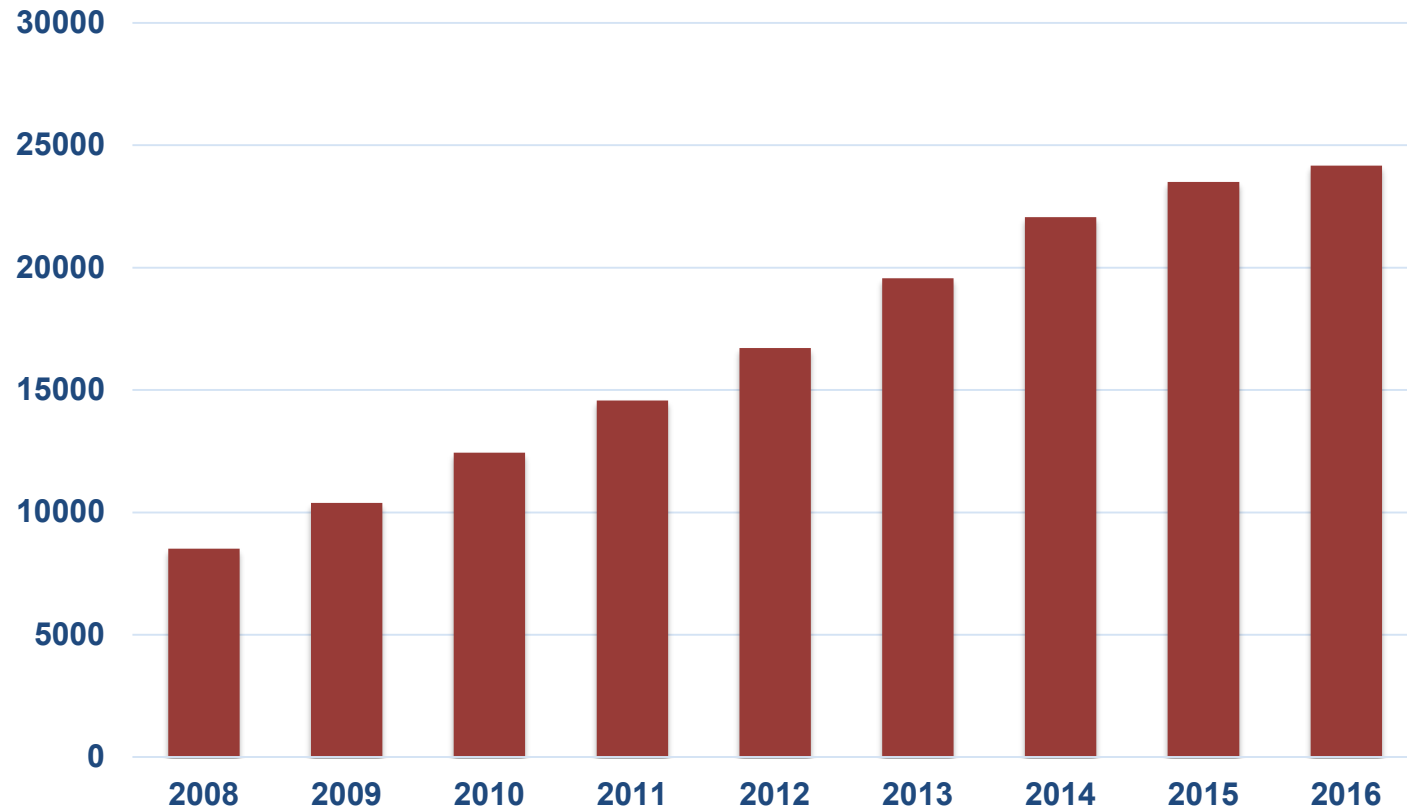
**Head Start and child care providers can provide
education to families and a safe, loving
environment for children**



OFFICE OF THE
ASSISTANT SECRETARY FOR HEALTH

<https://www.nbcmiami.com/news/local/Orphaned-by-Opioids-The-Silent-Victims-of-the-Crisis.html>

NEWBORN VICTIMS OF THE OPIOID EPIDEMIC



Source: AHRQ HCUP State Inpatient Databases

Outcomes in the Fetus

- Growth restriction
- Prematurity
- Death

Outcomes in the Newborn

- Low birthweight
- Small head circumference
- Neonatal abstinence syndrome

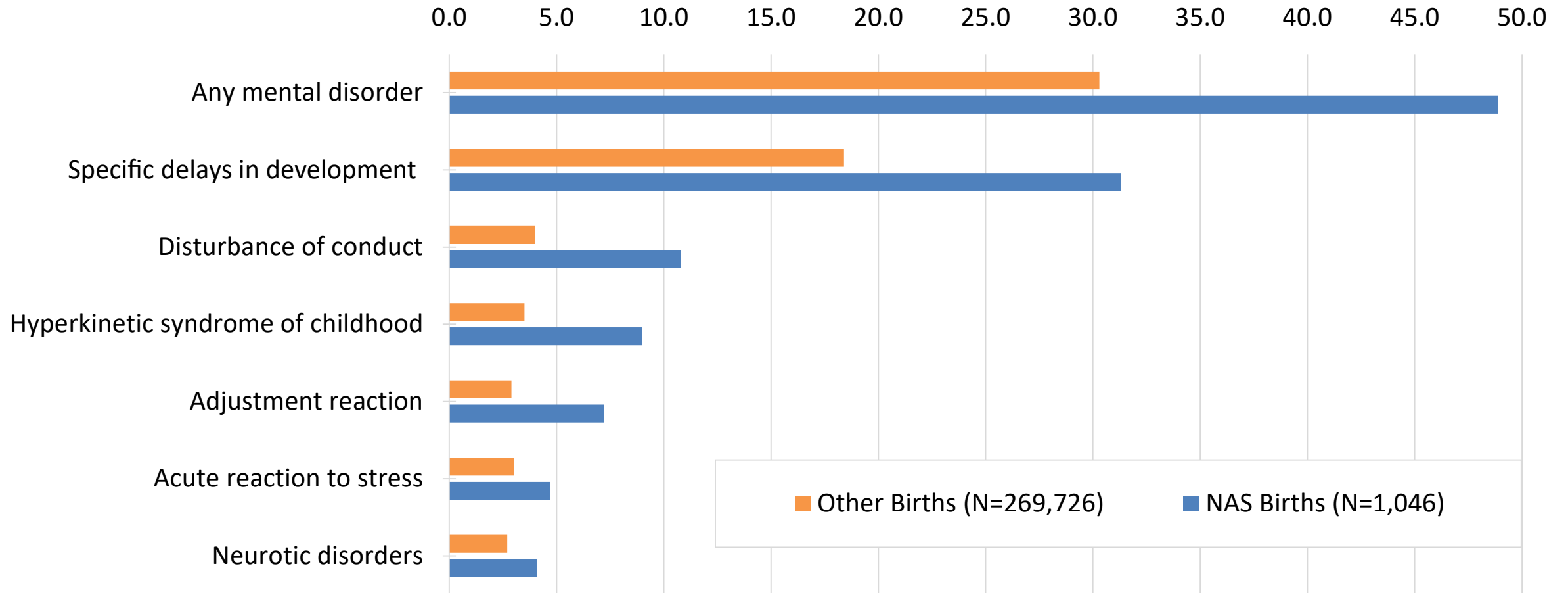
Outcomes in the Child

- Developmental disorders

McQueen, NEJM 2016

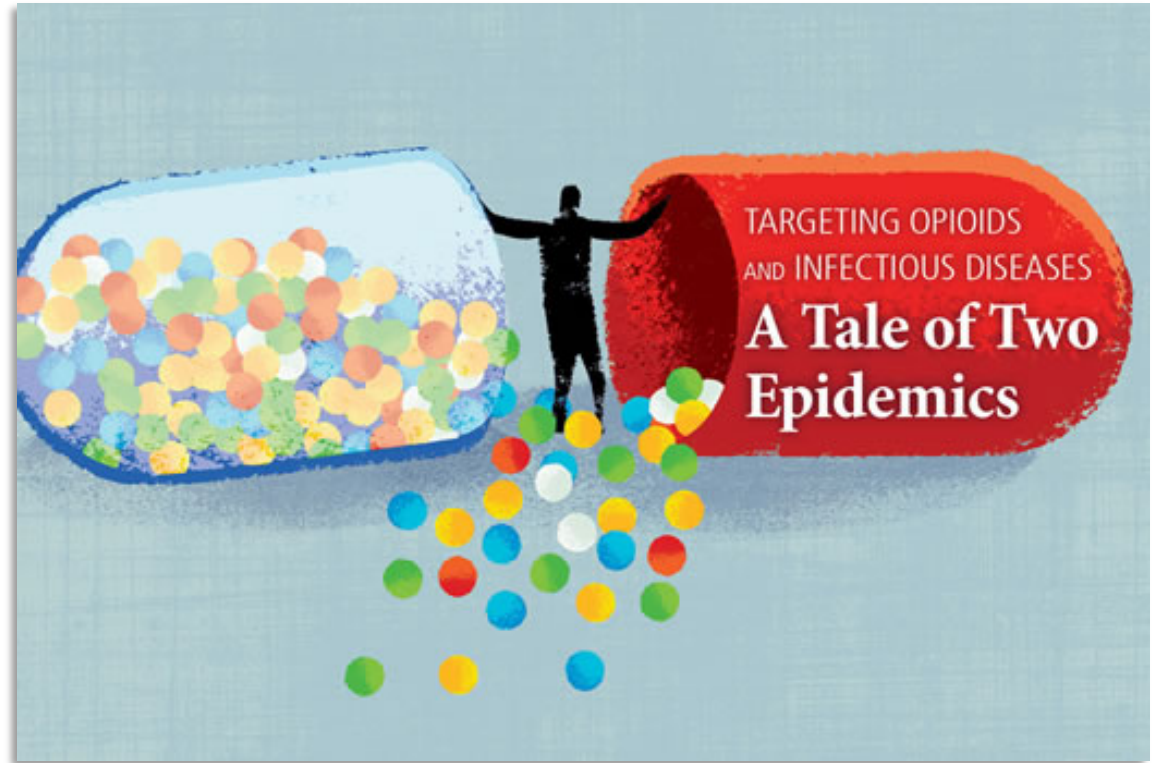


MENTAL DISORDERS AMONG CHILDREN BORN WITH NEONATAL ABSTINENCE SYNDROME (NAS) (%)



INFECTIOUS CONSEQUENCES OF THE OPIOID EPIDEMIC

- HIV
- Hepatitis C
- Hepatitis B
- Endocarditis
- Skin, bone, and joint infections



National Academies Workshop
Sponsored by OASH, Report July 2018



OFFICE OF THE
ASSISTANT SECRETARY FOR HEALTH

HHS 5-POINT STRATEGY TO COMBAT THE OPIOIDS CRISIS



Better addiction prevention, treatment, and recovery services



Better data



Better pain management



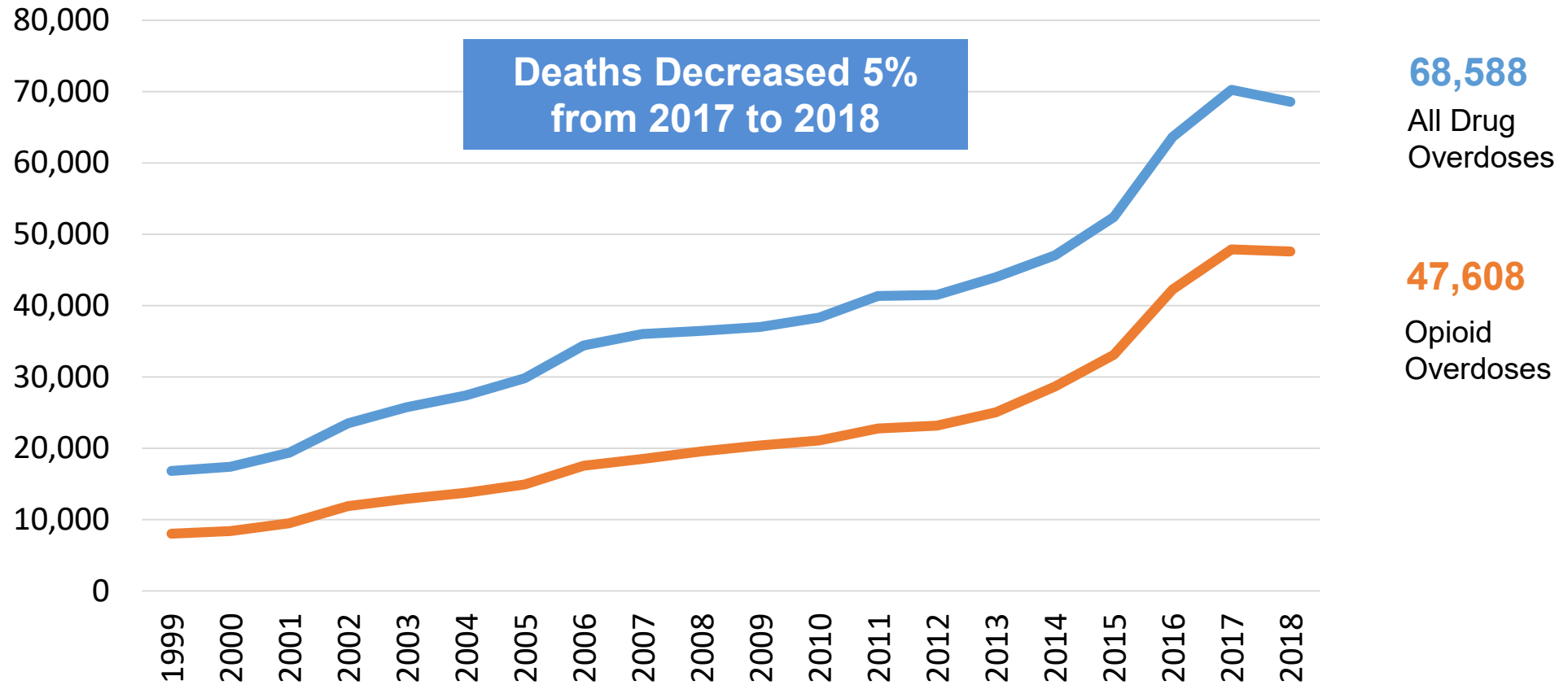
Better targeting of overdose reversing drugs



Better research

U.S. DRUG OVERDOSE DEATHS

THE MOST CRITICAL PUBLIC HEALTH CHALLENGE OF OUR TIME



WHAT IS EVIDENCE-BASED TREATMENT?

- **FDA-approved Medication (MAT)**

- **Naltrexone:** once a month injectable medication, blocks effects of opioids (any prescriber)
- **Buprenorphine** (usually with naloxone): once daily/once monthly, partial agonist opioid from prescribers (DATA 2000 waived prescribers)
- **Methadone:** long acting, once-daily, opioid from specially licensed programs (OTP programs only)

- **Psychosocial Therapies**

- Contingency management, family therapy, cognitive behavioral therapy, others

- **Recovery Services - Rebuilding One's Life**

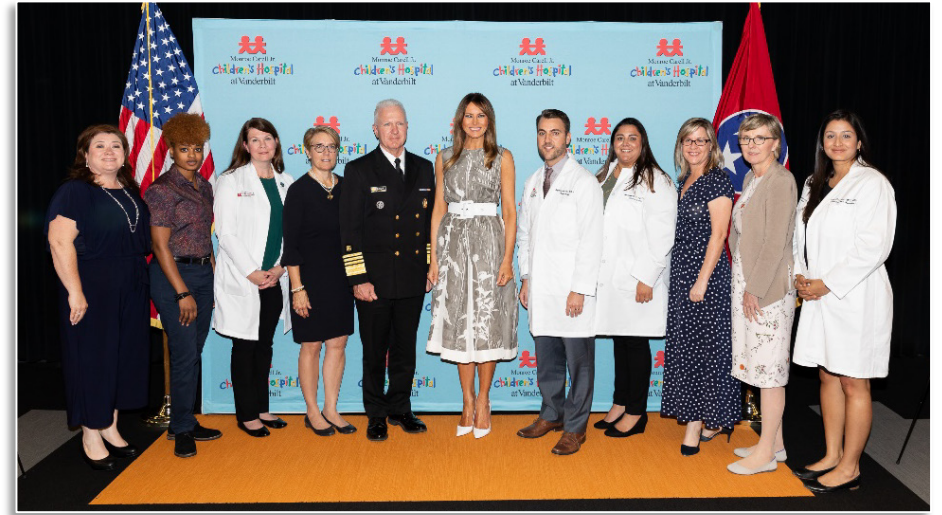
- Social supports to welcome into a healthy community: family, friends, peers, faith-based supports
- Assistance with needs that can impact treatment - recovery housing, transportation and child care
- Employment/vocational training/education

- **Naloxone**



TRANSFORM TO A SUSTAINABLE MODEL

Transition from a “crisis framework” into an integrated, sustainable, predictable, and resilient public health system for preventing and treating substance use and other behavioral health disorders.



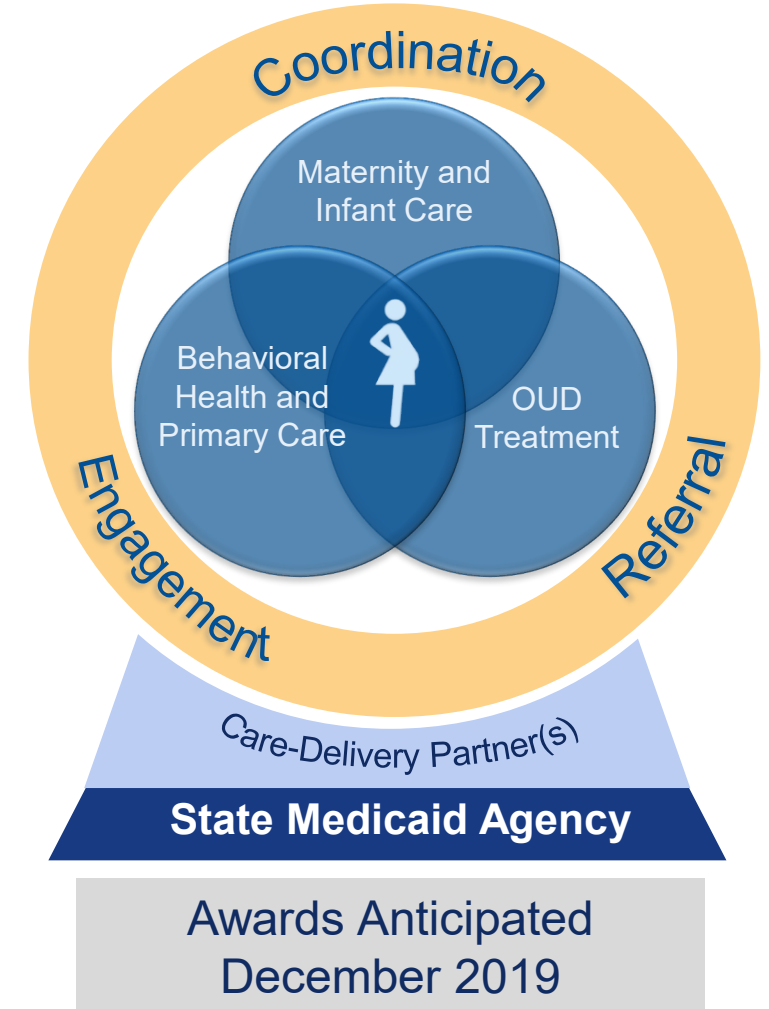
MATERNAL OPIOID MISUSE MODEL

The primary goals of the MOM Model are to:

- Improve quality of care and reduce costs for pregnant and postpartum women with OUD and their infants
- Expand access, service-delivery capacity, and infrastructure based on state-specific needs
- Create sustainable coverage and payment strategies that support ongoing coordination and integration of care

Requires

- Comprehensive care management
- Care coordination
- Health promotion
- Individual and family support
- Referral to family and social services



THE FUNDAMENTAL HUMAN SERVICE ISSUE

We must understand, engage, and remedy the underlying root causes of addiction, suicides, and other behavioral health issues.

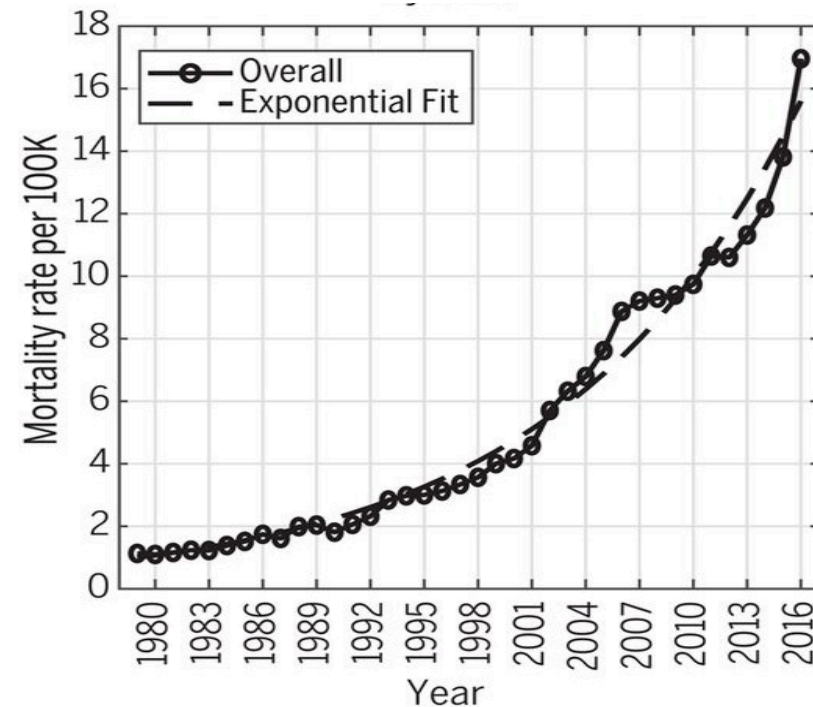
Science

RESEARCH ARTICLE SUMMARY

PUBLIC HEALTH Sept 21, 2018

Changing dynamics of the drug overdose epidemic in the United States from 1979 through 2016

Hawre Jalal, Jeanine M. Buchanich, Mark S. Roberts, Lauren C. Balmert, Kun Zhang, Donald S. Burke*



OFFICE OF THE
ASSISTANT SECRETARY FOR HEALTH



BRETT P. GIROIR, M.D.

ADM, U.S. Public Health Service
Assistant Secretary for Health,
Senior Adviser, Immediate Office of
the Secretary

WWW.HHS.GOV/ASH

WWW.USPHS.GOV

@HHS_ASH

ASH@hhs.gov