



# HUMAN SERVICES PROGRAMS AND THE OPIOID CRISIS

Randi Walters, PhD

Brandi Stocksdale, LCSW-C

September 17, 2019



# Effects of the Opioid Crisis On Individuals and Systems

How is the crisis hindering human services programs from meeting their objectives?



**The Maryland Department of Human Services** is the state's primary social service provider, serving over 1 million people annually. The Department aggressively pursues opportunities to assist people in economic need, provides preventive services, and protects vulnerable children and adults in each of Maryland's 23 counties and Baltimore City.



# The Vision For Maryland

- Maryland families will be safe and economically stable
  - Transitional supports for families
  - Funding innovative practice on the local level
- We will be deliberate about how we apply a Two-Gen lens across programs, policies, and agencies
  - ASCEND Network Best Practice Model
  - Braiding funds, breaking silos, correcting contradictory policies
- We will use rigorous measurement and sound evaluation practices as tools to hold ourselves accountable for accomplishing our mission.

# Our Structure



Social Services Administration



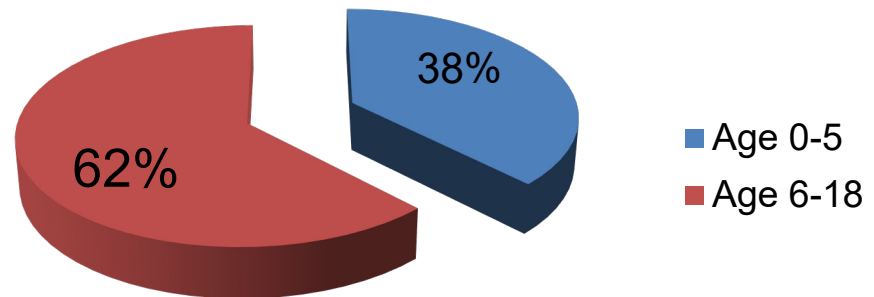
Family Investment Administration



Child Support Administration

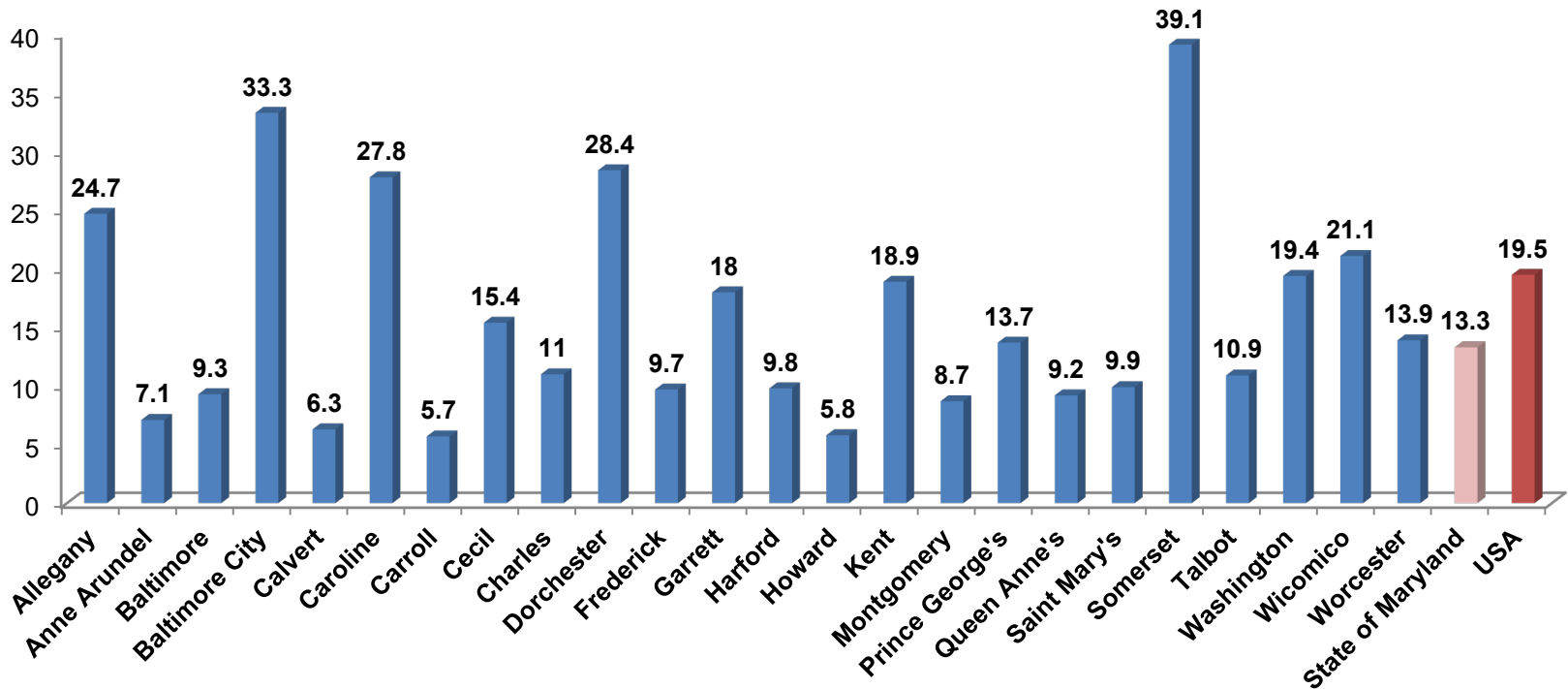
# Intergenerational Poverty in Maryland

- 717,463 families live in poverty
  - 19% increase from 20 years ago
  - 13.3% of children
  - 37% of children in poverty do not have any employed parent, either FT or PT



# Intergenerational Poverty in Maryland

% of child population in each jurisdiction in poverty



# Two-Generation Approach

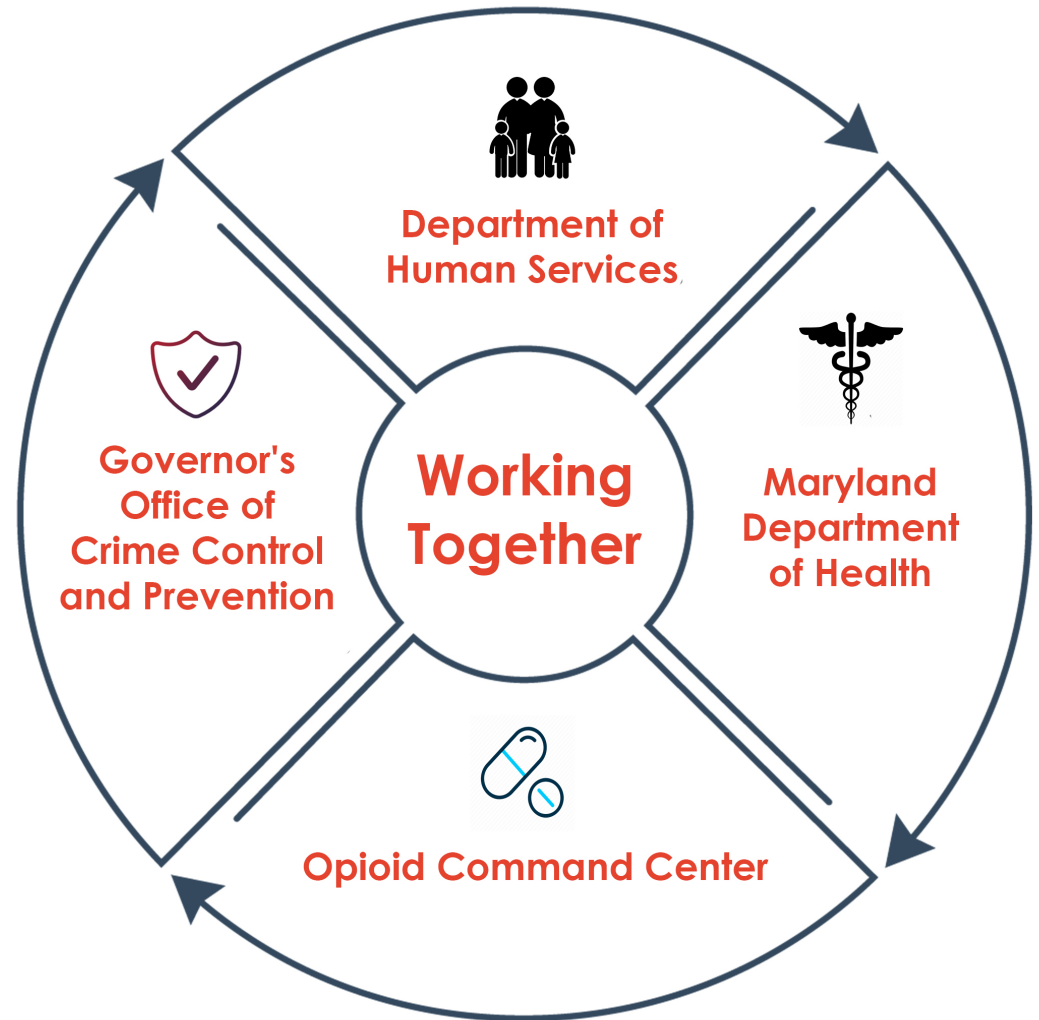
Improves outcomes for **whole families** by coordinating and aligning services, policies, and systems to promote economic self-sufficiency and security.





Cross System  
Collaboration  
To Address  
The Opioid  
Crisis:

## Who Is Working Together?



# Challenges and Barriers to Serving Families Struggling with Substance Use Disorder



Lack of  
Coordination  
across state  
agencies



Difficulty sharing  
information  
across agencies



Difficulty  
collecting specific  
data points

## Challenges and Barriers to Serving Families Struggling with Substance Use Disorder



Service Array



Trauma Responsive Services



Steady Increase of Substance Exposed  
Newborns

## **Barriers Specific to Intervening with Substance Exposed Newborns**

- Inconsistent testing and reporting practices among providers
- Lack of universal screening and referral tool for MA and private patients with SUD



## **Barriers Specific To Intervening with Substance Exposed Newborns**

---

- Engagement of MAT and private practitioners who prescribe Suboxone, Subutex and Methadone
- Lack of substance use monitoring in patients who had been prescribed medical marijuana before pregnancy
- Access to quick treatment
- Lack of in-patient beds for parents with children



# Family Support Administration Challenges and Barriers

---



Intersection of Poverty  
and Opioid Use



Fear of Losing  
Benefits/Legal  
Ramifications



Lack of Opioid Use  
Disorder Programs  
Tailored Specifically to  
TANF recipients' needs



Work Participation



Compliance Culture  
Within FIA

## **Child Support Administration Challenges and Barriers**

- Lack of IV-D Funding for Noncustodial Parent Employment and Training Programs
- Changing an Enforcement Culture of the Workforce



# Opportunities To Better Support Children and Families

- Train child-serving professionals about what happens in other systems and agencies
  - Medicaid Funding and Health Care System
- Remove Stigma and Shifting Culture of Child Removal
- Break Down Silos Between Systems
- Understand and Align Funding Streams
- Create mobile response teams