



KI'I POWELL

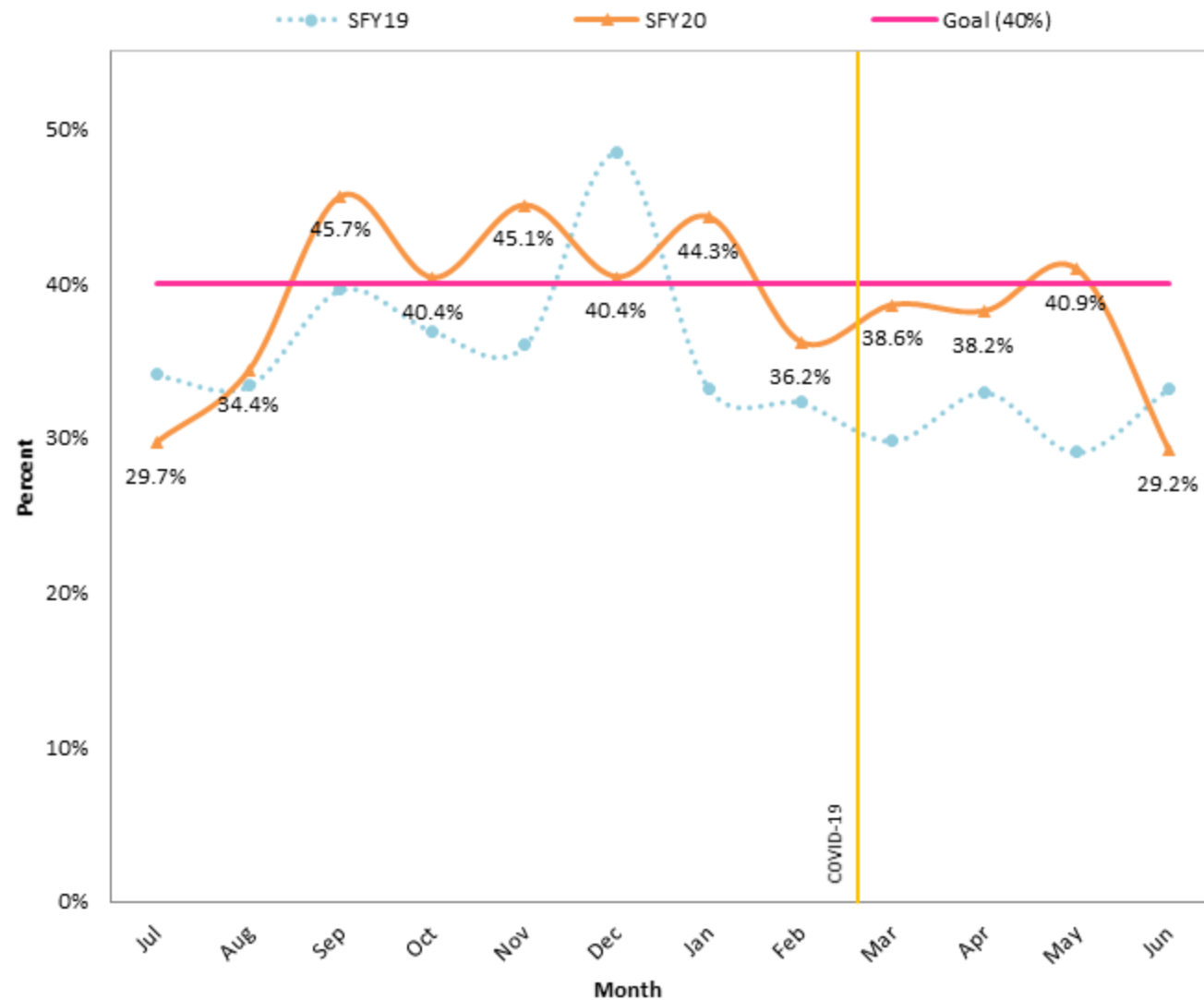
Director of the Office of
Economic Security,
Colorado Department of
Human Services (CDHS)

COLORADO

Colorado Works Work Participation Rate (WPR) All-Family Sample

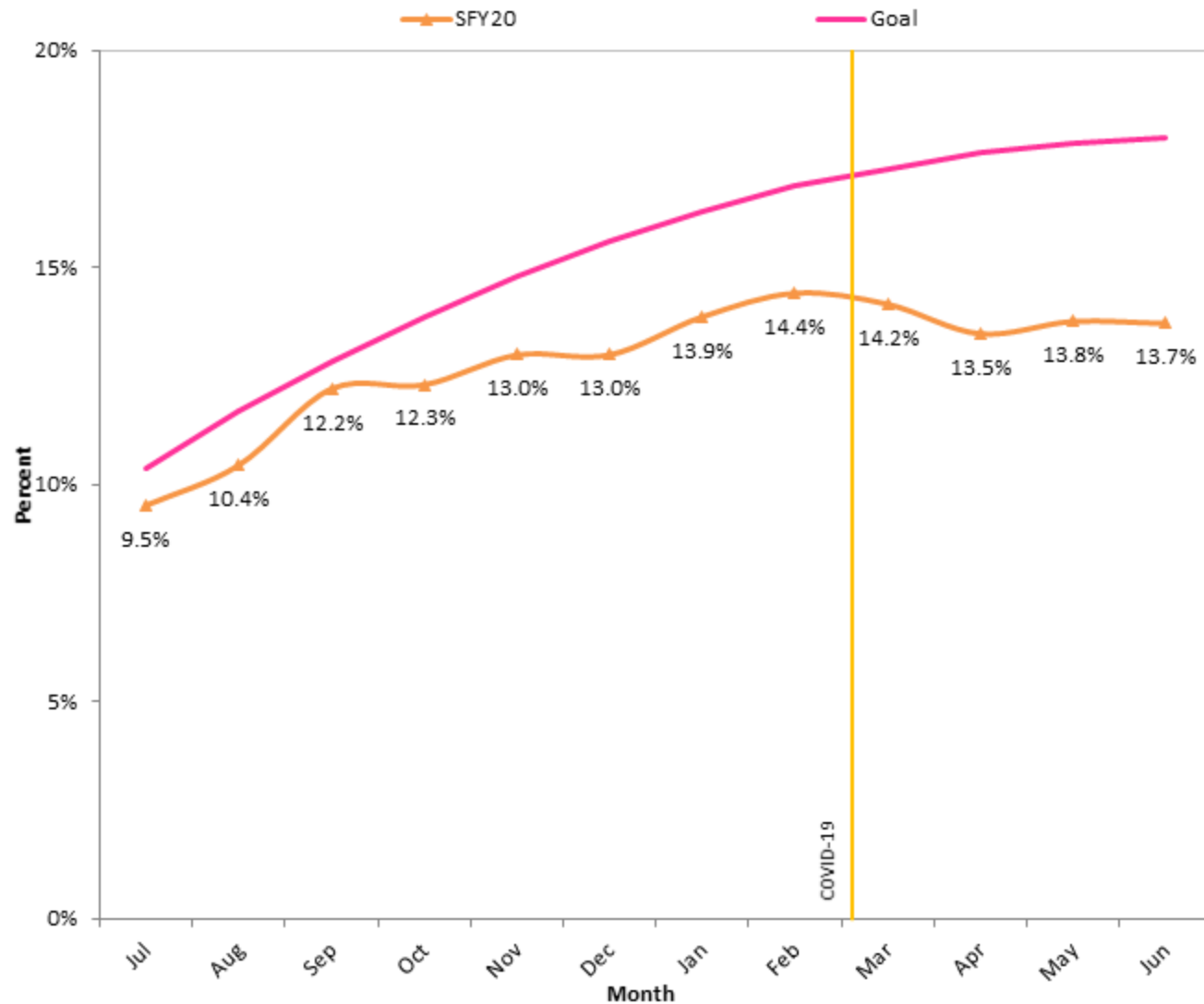
Where to start?

- data on hand
- what is required



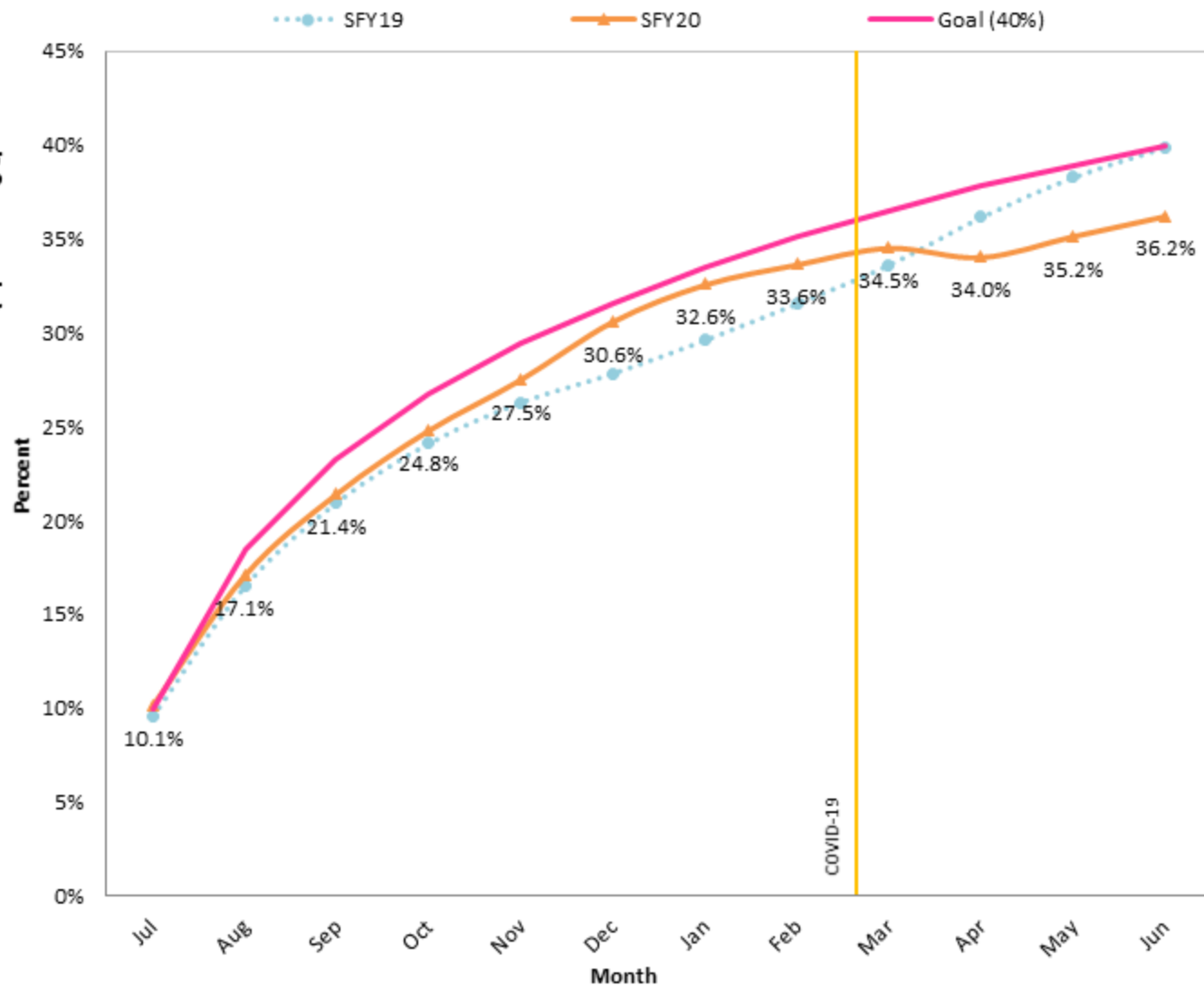
Colorado Works Individuals Engaged in Work-Based Learning Activities - Cumulative

- Build off of regulatory measures.
- Measure what matters to clients.
- It's okay to start with process measures.
- These often lead to the right outcome measures.



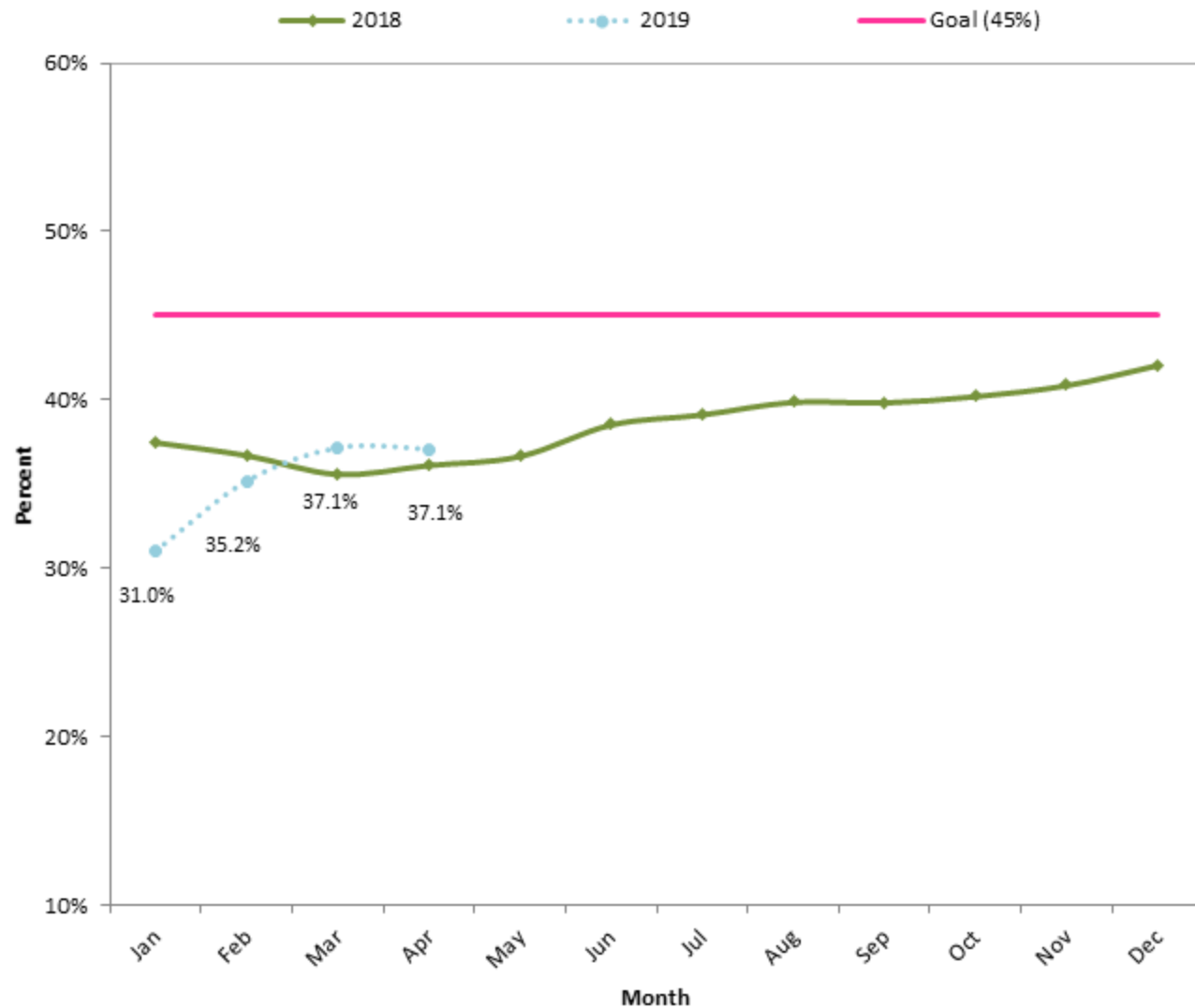
Colorado Works Entered Employment Cumulative

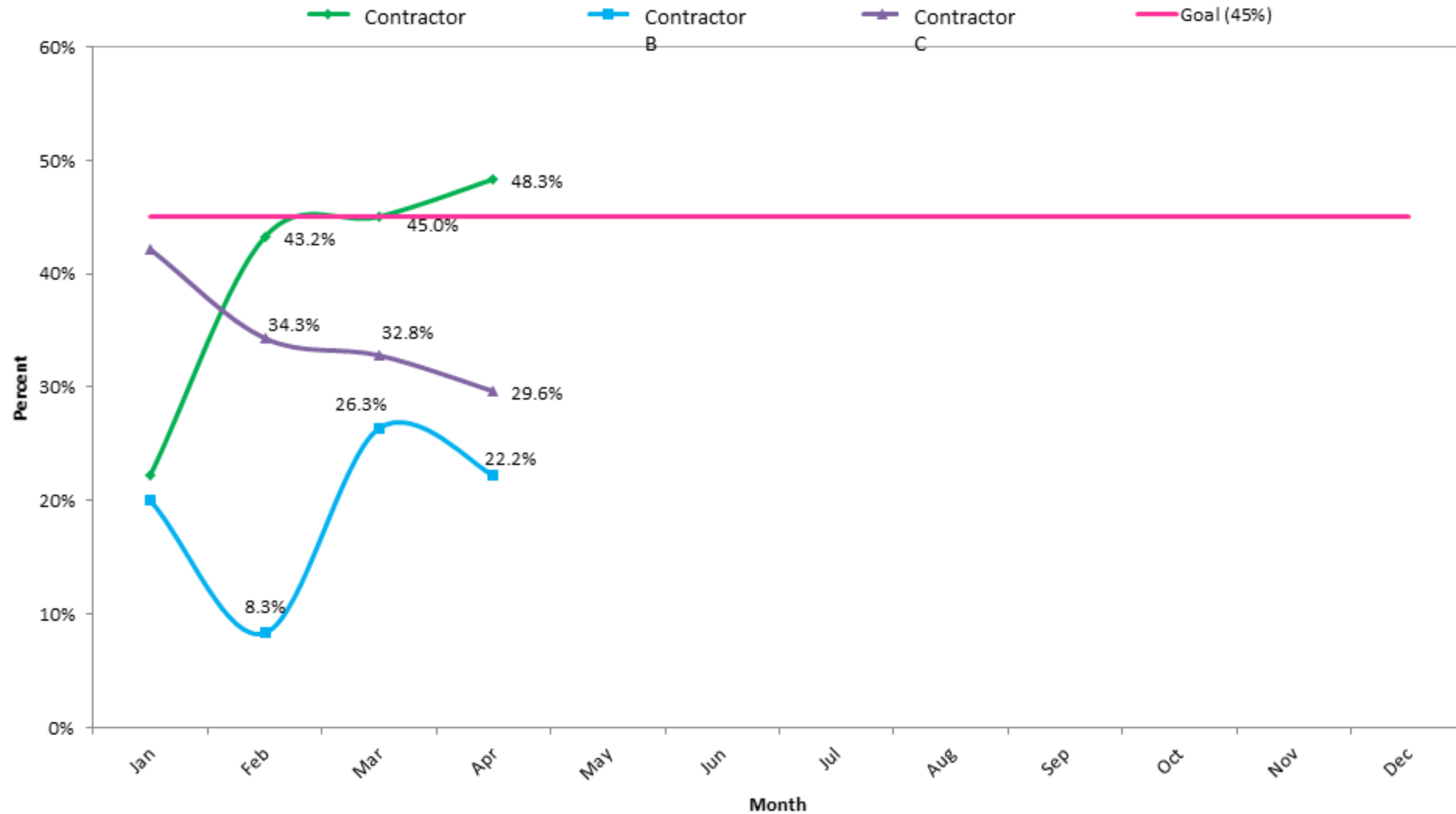
- Enrolling clients in work based learning activities should lead to employment outcomes.



Break out data by meaningful units of analysis.

- Contractors
- Counties
- Regional Offices
- Supervisor
- Worker



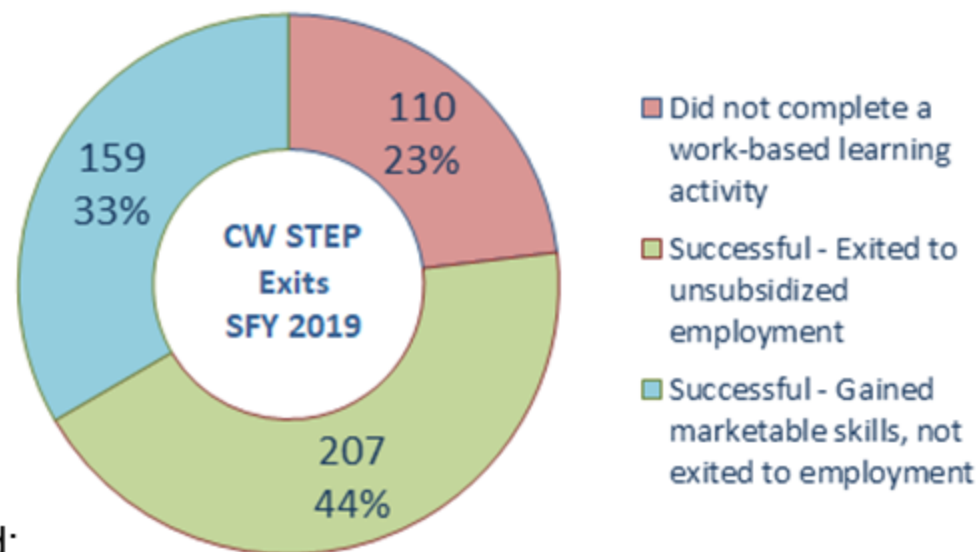


Reference Data

CW STEP Exits by Outcome in SFY 2019

Use the right method.

- program evaluation
- research



In SFY19, 476 participants exited:

- 366 had successful outcomes at program exit
 - 33% exited to unsubsidized jobs, all of which paid a living wage.
 - median wage earned post CW-STEP is \$13.07/hour.

Just get started!

Contact me:

ki'i.powell@state.co.us