

Centering Racial Equity Throughout the Data Life Cycle

Amy Hawn Nelson

Actionable Intelligence for Social Policy

September 29th, 2021



THE ANNIE E. CASEY FOUNDATION



What we do

Peer Network

Guidance & Standards

Training & Consulting

Advocacy & Communications

Actionable Research

INTRODUCTION TO

Data Sharing & Integration

CASE STUDY

How the Indiana Management Performance Hub's Data Capacity Helped Fuel COVID-19 Research and Response

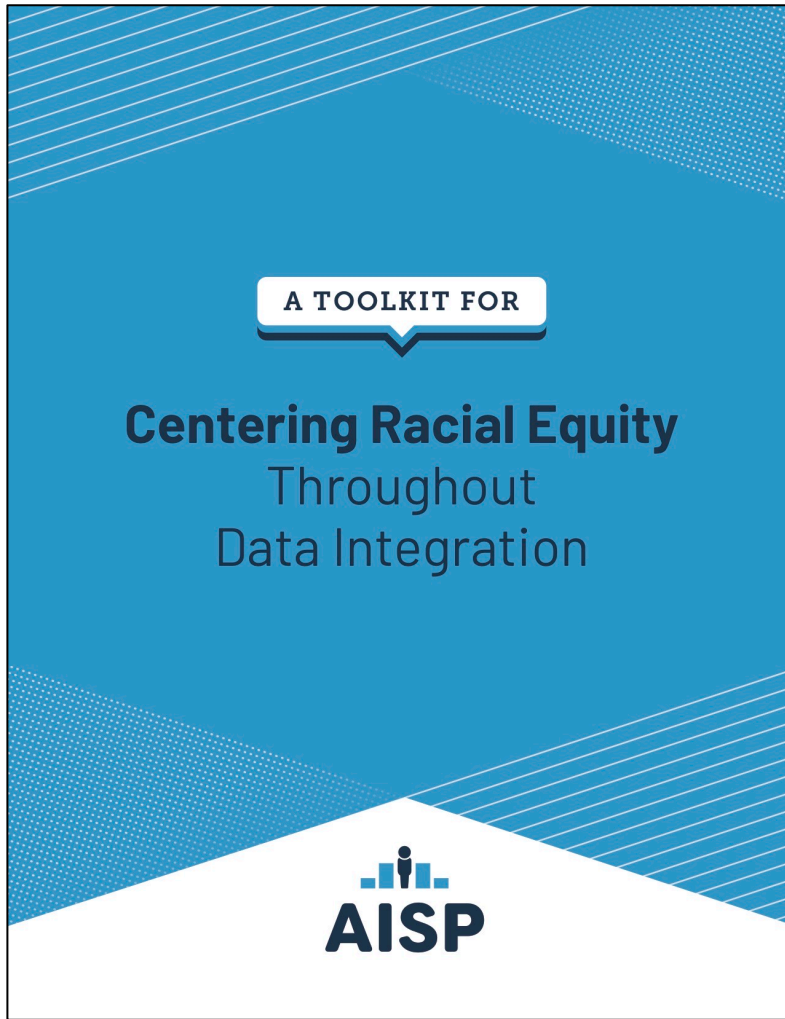


A TOOLKIT FOR

Centering Racial Equity Throughout Data Integration

Building + Sustaining State Data Integration Efforts: Legislation, Funding, and Strategies





<https://bit.ly/CenterRacialEquity>



Hawn Nelson, A., Jenkins, D., Zanti, S., Katz, M., Berkowitz, E., et al. (2020). [A Toolkit for Centering Racial Equity Throughout Data Integration](https://bit.ly/CenterRacialEquity). Actionable Intelligence for Social Policy, University of Pennsylvania.

Our approach

Data sharing is as relational
as it is technical.



We don't just need to integrate data;
we need to integrate people.

Process



Workgroup Contributors

Niiobli Armah	My Brother's Keeper, Equity Intelligence Platform
Bridget Blount	Baltimore's Promise
Angela Bluhm	Chief Education Office, State of Oregon
Katy Collins	Allegheny County Department of Human Services
Sheila Dugan	GovEx, Johns Hopkins University
Sue Gallagher	Broward Data Collaborative, Children's Services Council of Broward County
Laura Jones	Writer and Community Advocate based in Minnesota
Chris Kingsley	Annie E. Casey Foundation
Ritika Sharma Kurup	StriveTogether
Tamika Lewis	Our Data Bodies
Rick Little	Utah Dept of Human Services, Management Information Center
Tawana Petty	Detroit Community Technology Project & Our Data Bodies
Raintry Salk	Race Forward and Government Alliance for Racial Equity (GARE)
Michelle Shevin	Ford Foundation

Work in Action Contributors

Allegheny County (PA), Department of Human Services,
Office of Analytics, Technology, & Planning

Allegheny County (PA) Department of Human Services,
Office of Equity & Inclusion

Automating.NYC

Birth through Eight Strategy for Tulsa (BEST)

Children's Services Council of Broward County (FL)

City of Asheville (NC)

City of Tacoma (WA)

DataWorks NC

Kentucky Center for Statistics

Mecklenburg County (NC) Community Support Services

New York City Administration for Children's Services &
Youth Studies Programs at the CUNY School of
Professional Studies

Take Control Initiative (OK)

Samantha Looney, Brian Bell, Ellen Kitzerow,
Julia Reuben, Shannon Flynn, & Jamaal Davis

Shauna Lucadamo & Jessica Ruffin

Deepra Yusuf, Elyse Voegeli, Akina Younge, & Jon
Truong

Jessica England & Dan Sterba

Sue Gallagher

Christen McNamara & Kimberlee Archie

Alison Beason

Libby McClure & John Killeen

Jessica Cunningham

Courtney LaCaria & Mary
Ann Priester

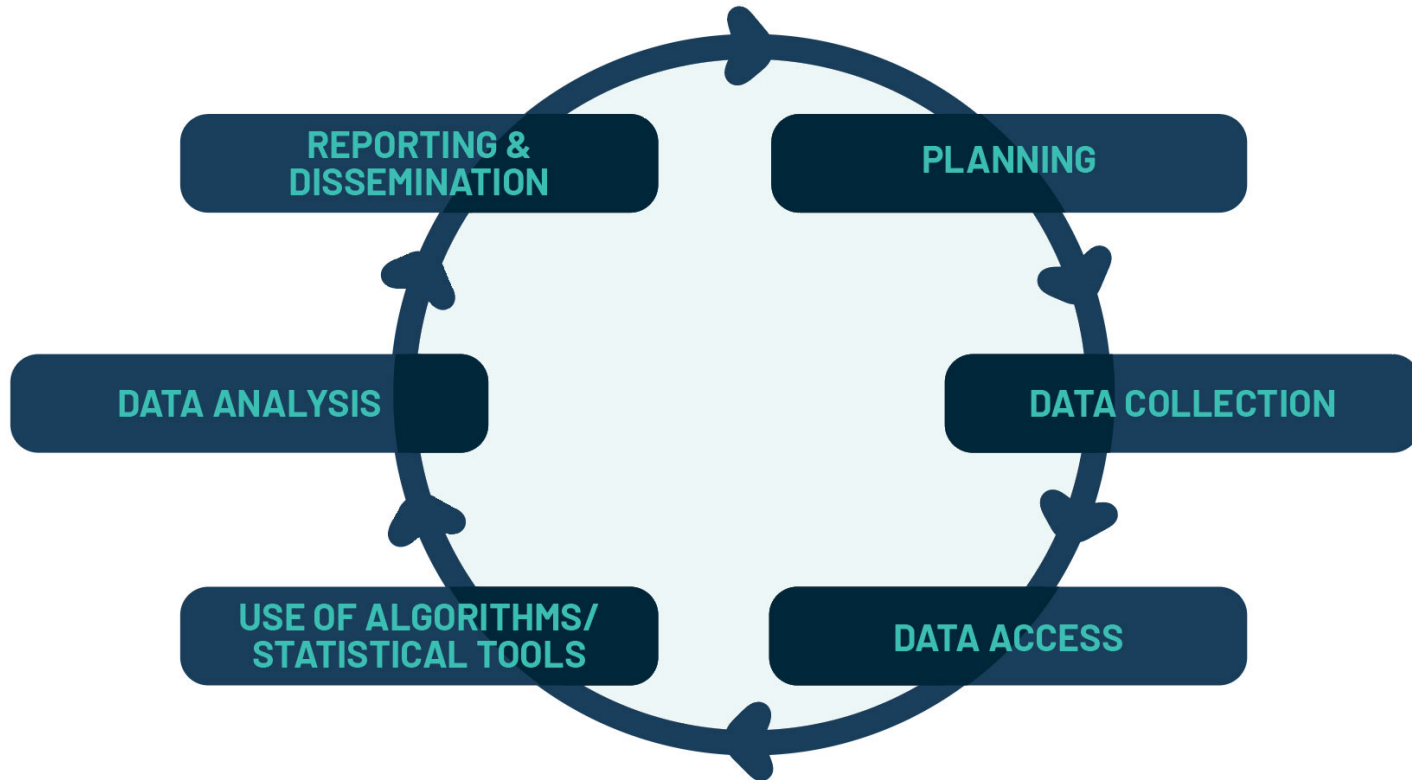
Sarah Zeller-Berkman

Emma Swepston, Laura Bellis, & Brandy
Hammons

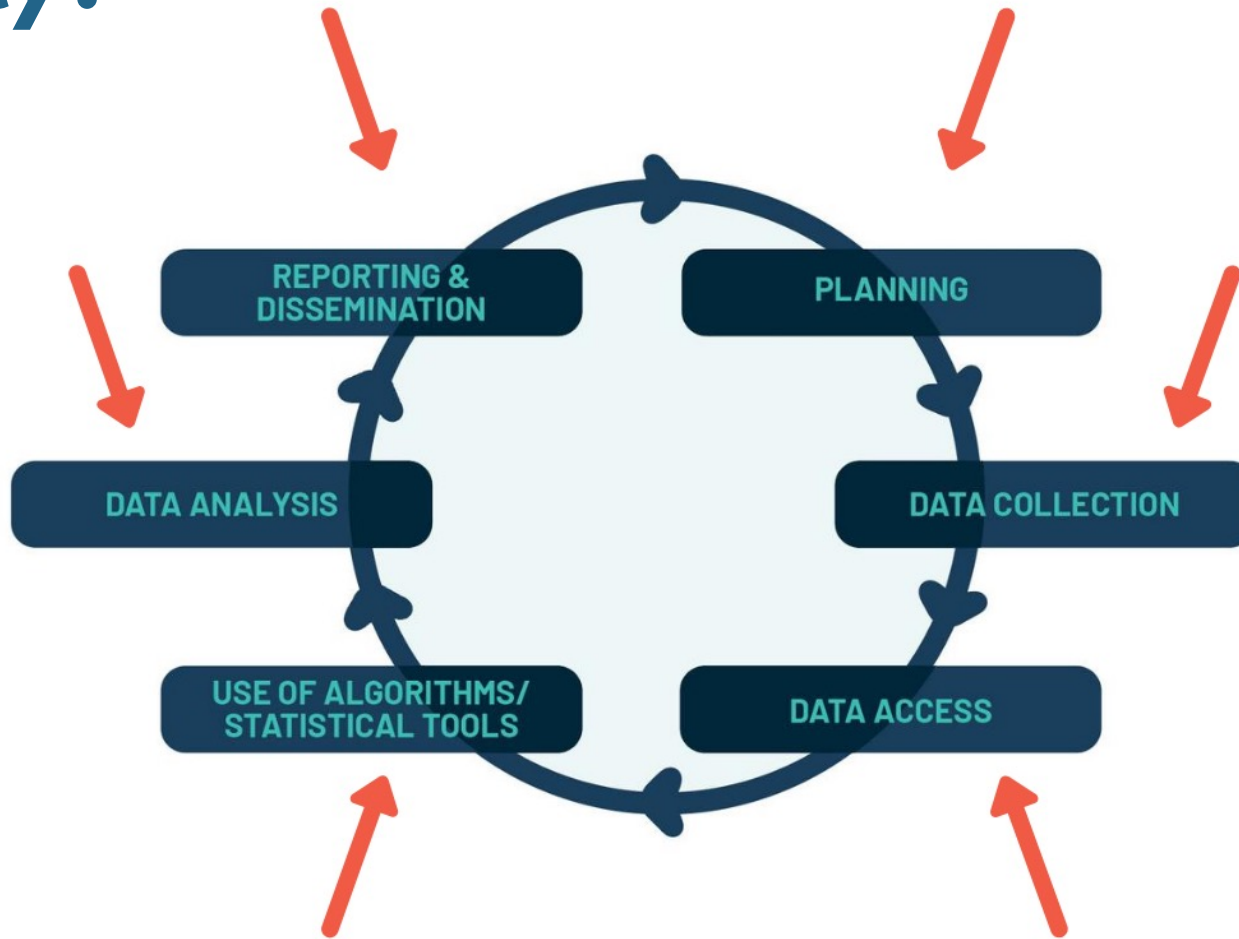
**As railroads and highways
both developed and
decimated communities, so
too can data infrastructure.**

**We can co-create data infrastructure to
promote racial equity and the public good, or
we can invest in data infrastructure that
disregards the historical, social, and political
context.**

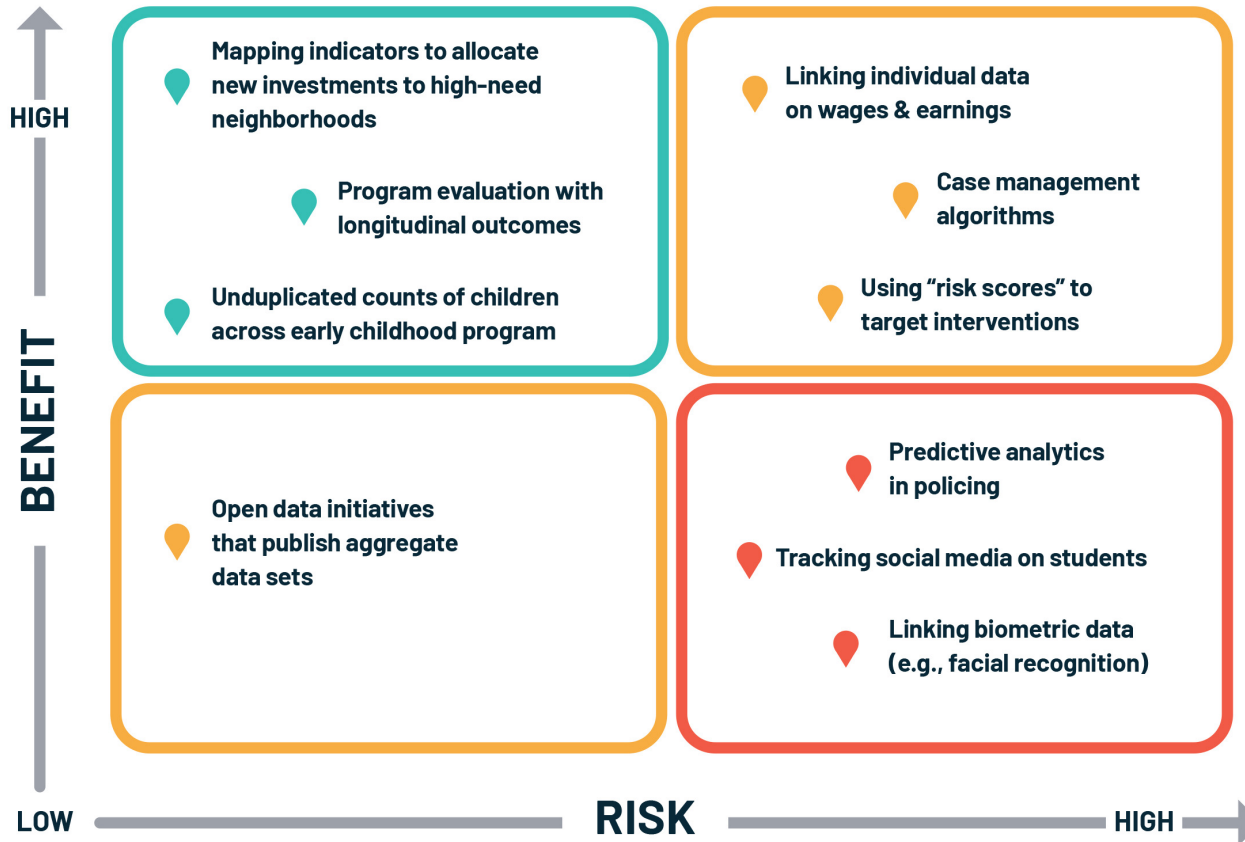
Where do we need to center racial equity?



Where do we need to center racial equity?



Benefit/Risk Matrix



Biggest Takeaway?

Whether you're a data owner, a data steward, a data custodian, a caseworker — no matter where you are, there is something you can do, today, to center racial equity.

Questions?

Amy Hawn Nelson, PhD

AISP Director of Training & Technical Assistance

ahnelson@upenn.edu



@AISP_Penn @hawnnelson

Check out our publications & quality framework:

www.aisp.upenn.edu

Subscribe to our newsletter: <https://bit.ly/signupAISPnewsletter>

